



POWELL BILL MAP 2025-2026

State of North Carolina

County of Union

This is to certify that I am a Registered Professional Engineer or Land Surveyor pursuant to the laws of the State of North Carolina; and that I have examined the mileage statements and maps referred to above; that I have made actual measurements and examinations of non-State system streets in the above municipality and from said examinations and measurements, the statements and distances contained in said table are correct; and the map and the mileage statements are correct within a possible error of one-hundredth of a mile per mile.

WITNESS my hand and seal, this the 1 day of July, 2025

James C. Kelly, PE
Registered Professional Engineer or Land Surveyor



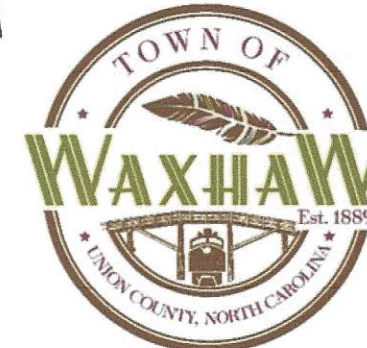
Attached hereto, and made a part hereof by reference, is a certified copy of the official street system map of this municipality as of July 1, 2025, on which map has been shown in distinctive colors the location of all streets on the State system and all private streets which are not a part of the total local street mileage shown in the above table. All remaining streets are maintained by the municipality, and the said map is being submitted as evidence of, and in support of, the claim made by this municipality for mileage allocations pursuant to Paragraph 2 of G.S. 136-41.1, as amended.

WITNESS my hand and seal, this the 1st day of July, 2025.

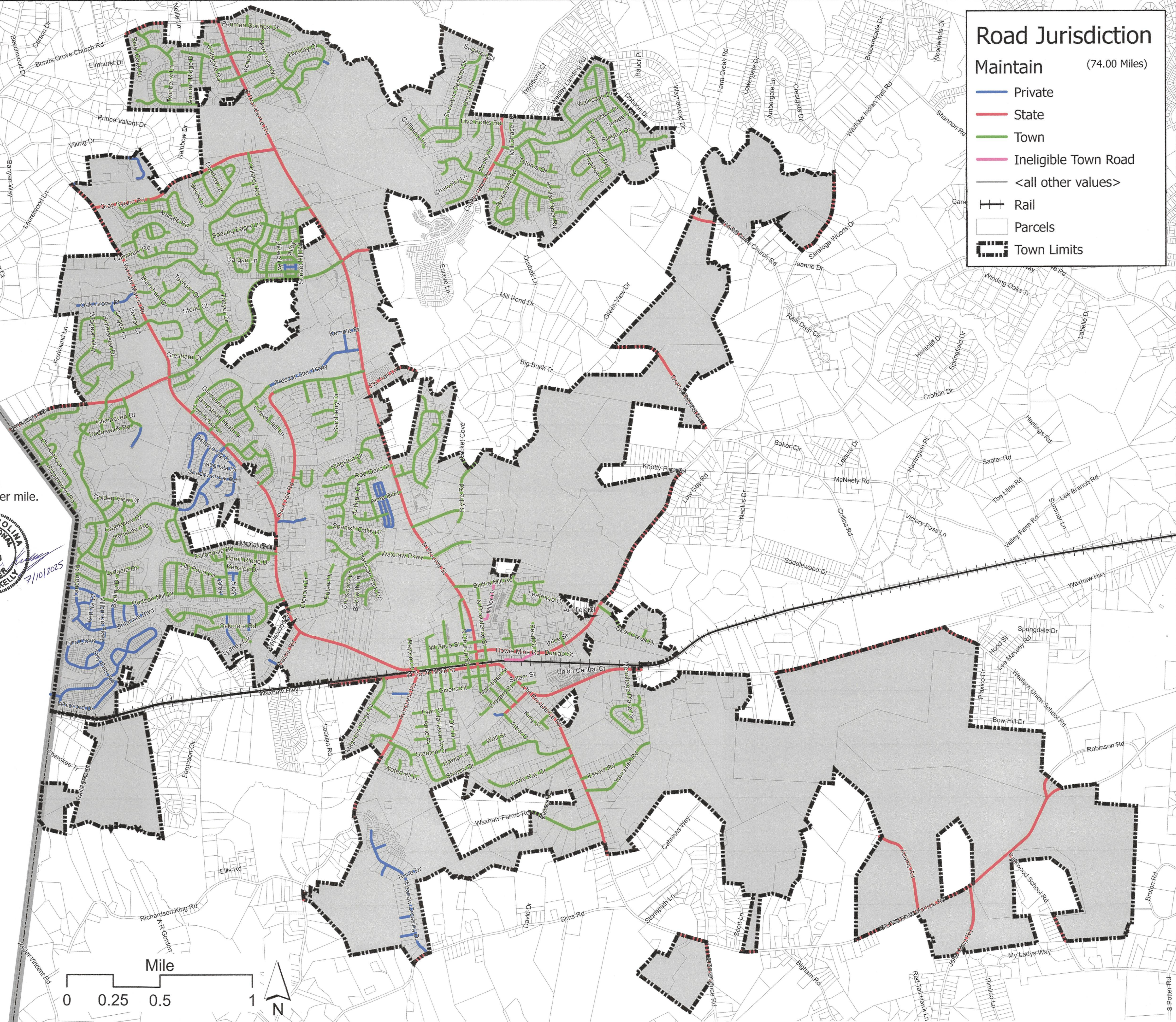
ATTEST:

Barbara B. Bruce
CLERK

Gregory Smith
MAYOR



Data Source and Disclaimer
Data provided by Union County GIS and Town of Waxhaw GIS. The Town of Waxhaw does not guarantee the accuracy of the information displayed. Updated June, 2024.



Road Jurisdiction

Maintain (74.00 Miles)

- Private
- State
- Town
- Ineligible Town Road
- <all other values>
- Rail
- Parcels
- Town Limits